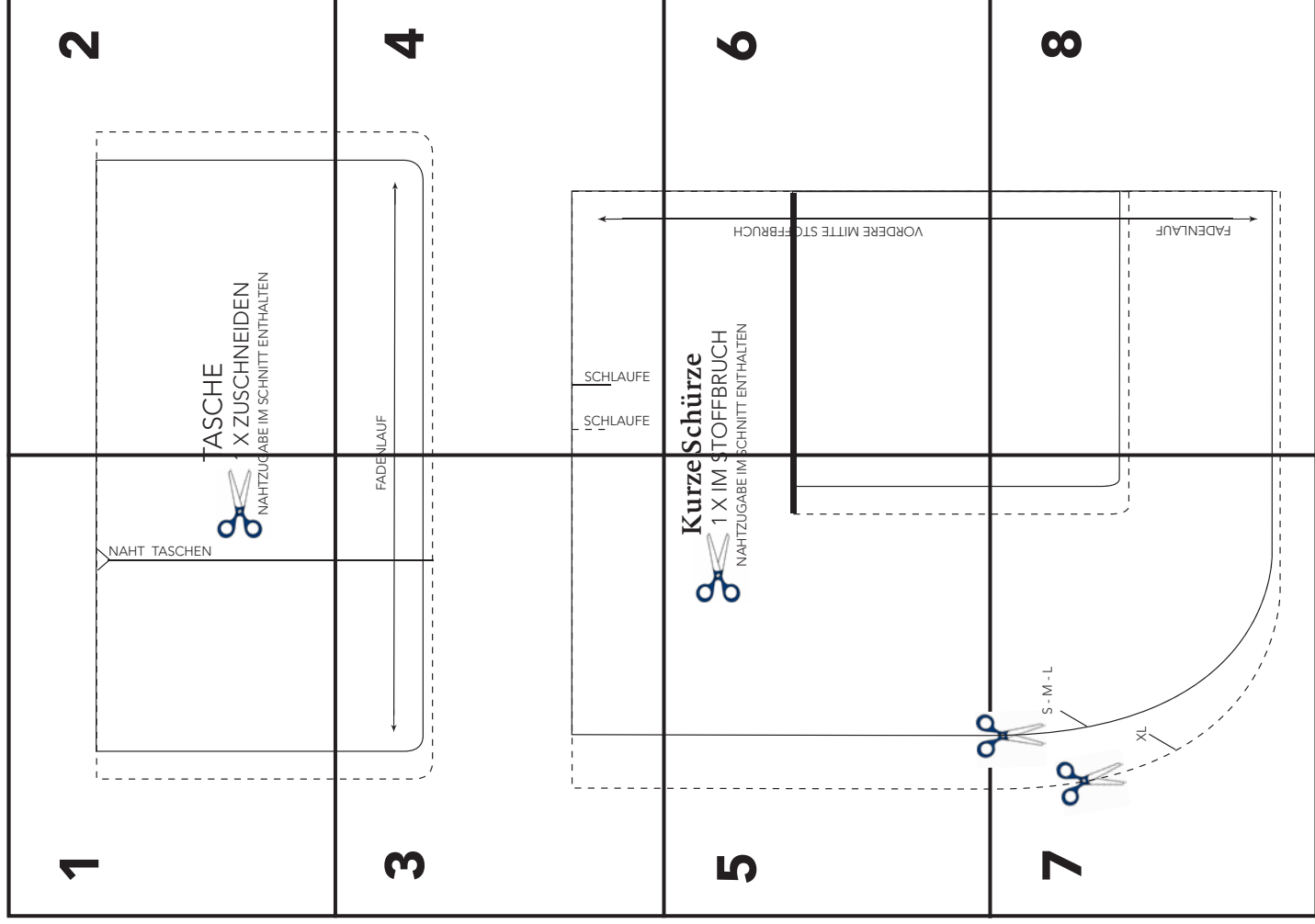
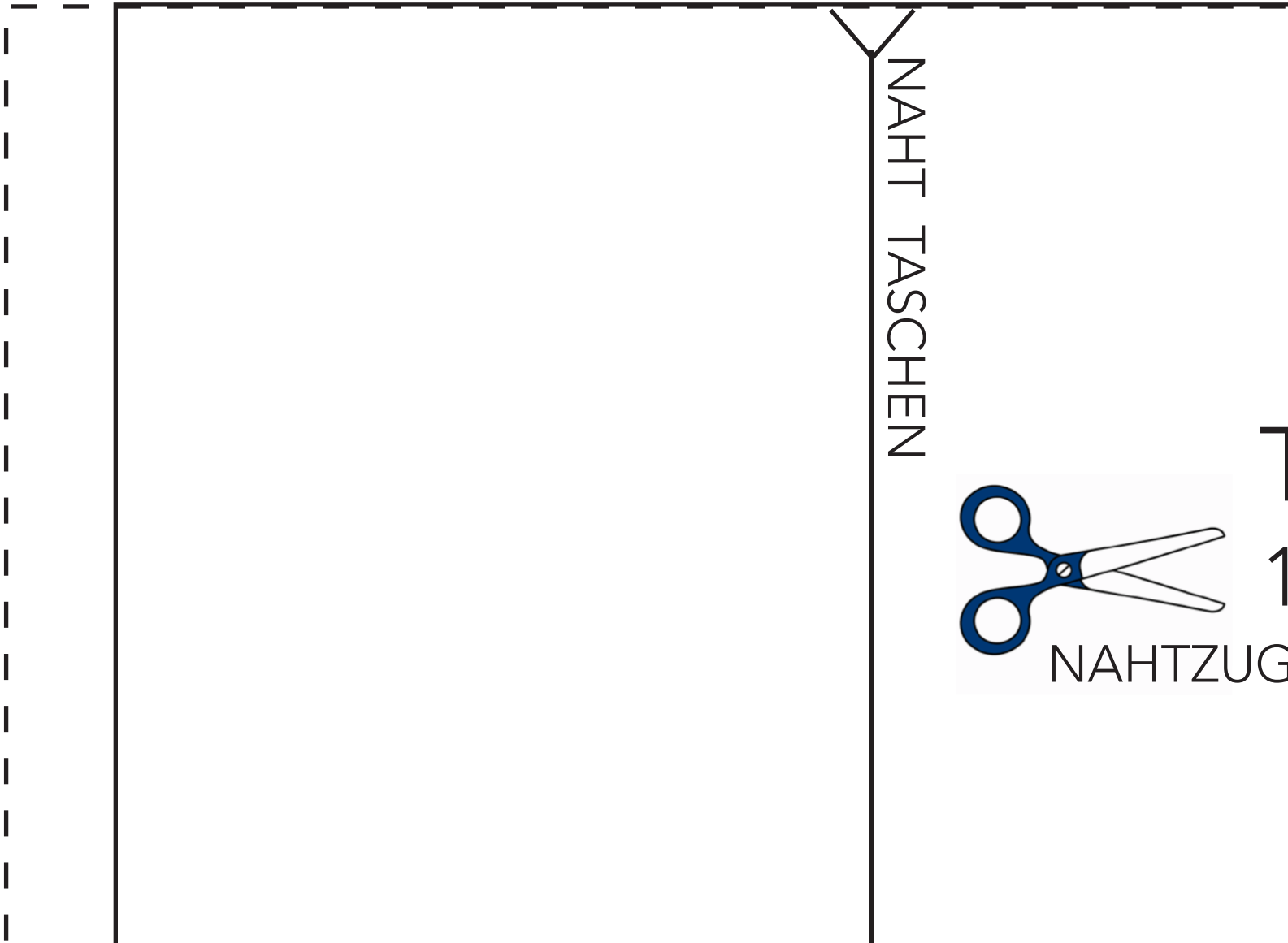


# Kurze Schürze



1



NAHT TASCHEN



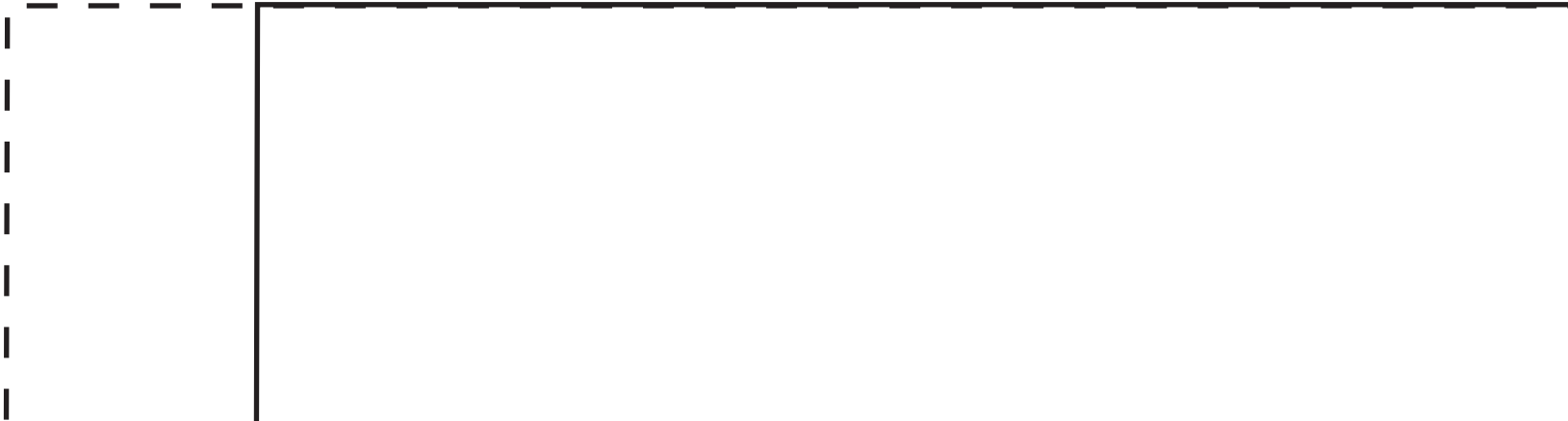
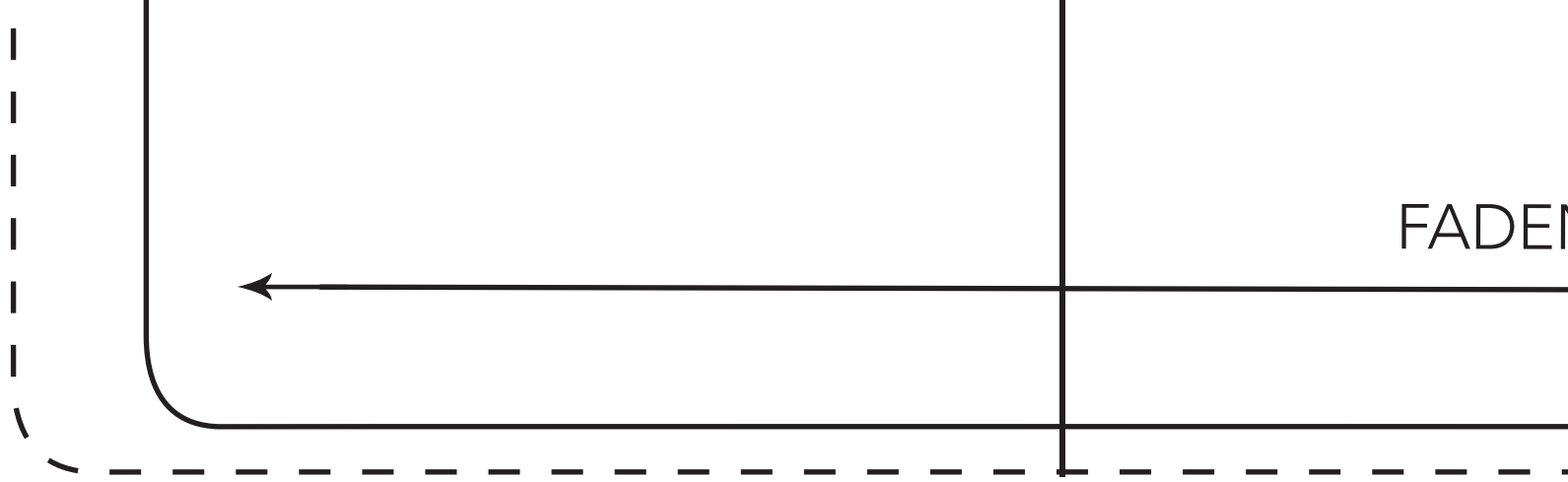
NAHTZUG

TASCHE

X ZUSCHNEIDEN

GABE IM SCHNITT ENTHALTEN

3



NLAUF



4

SCHLAUFE

SCHLAUFE



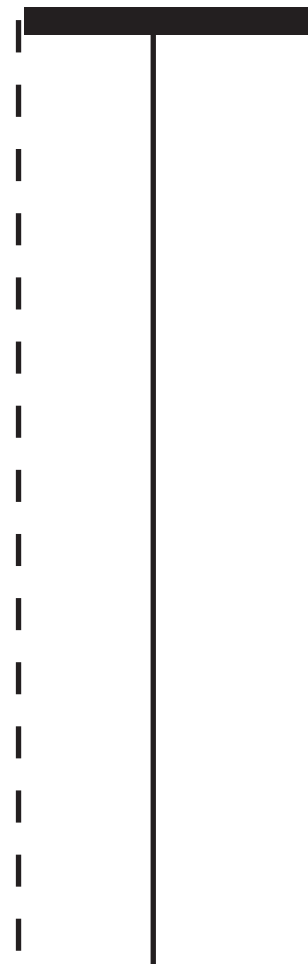
5



Kurze

1 X IM S

NAHTZUGABE IM S



# Schürze

STOFFBRUCH

SCHNITT ENTHALTEN

VORDERE MITTE STOFFBRUCH

6

7

