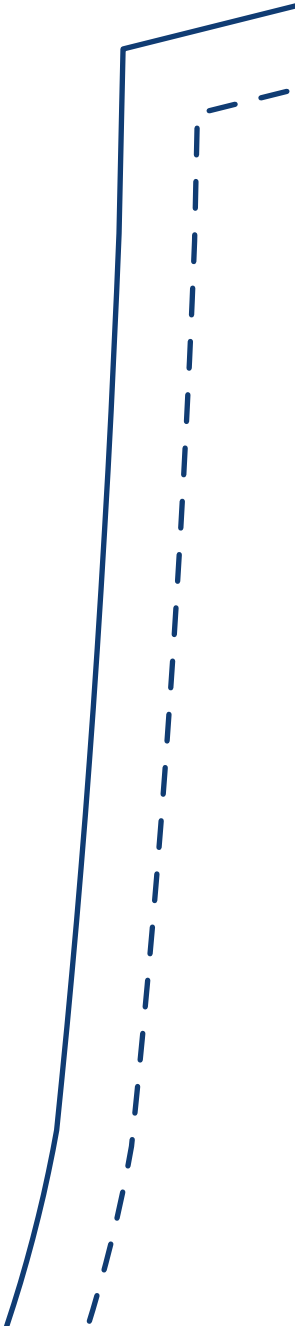
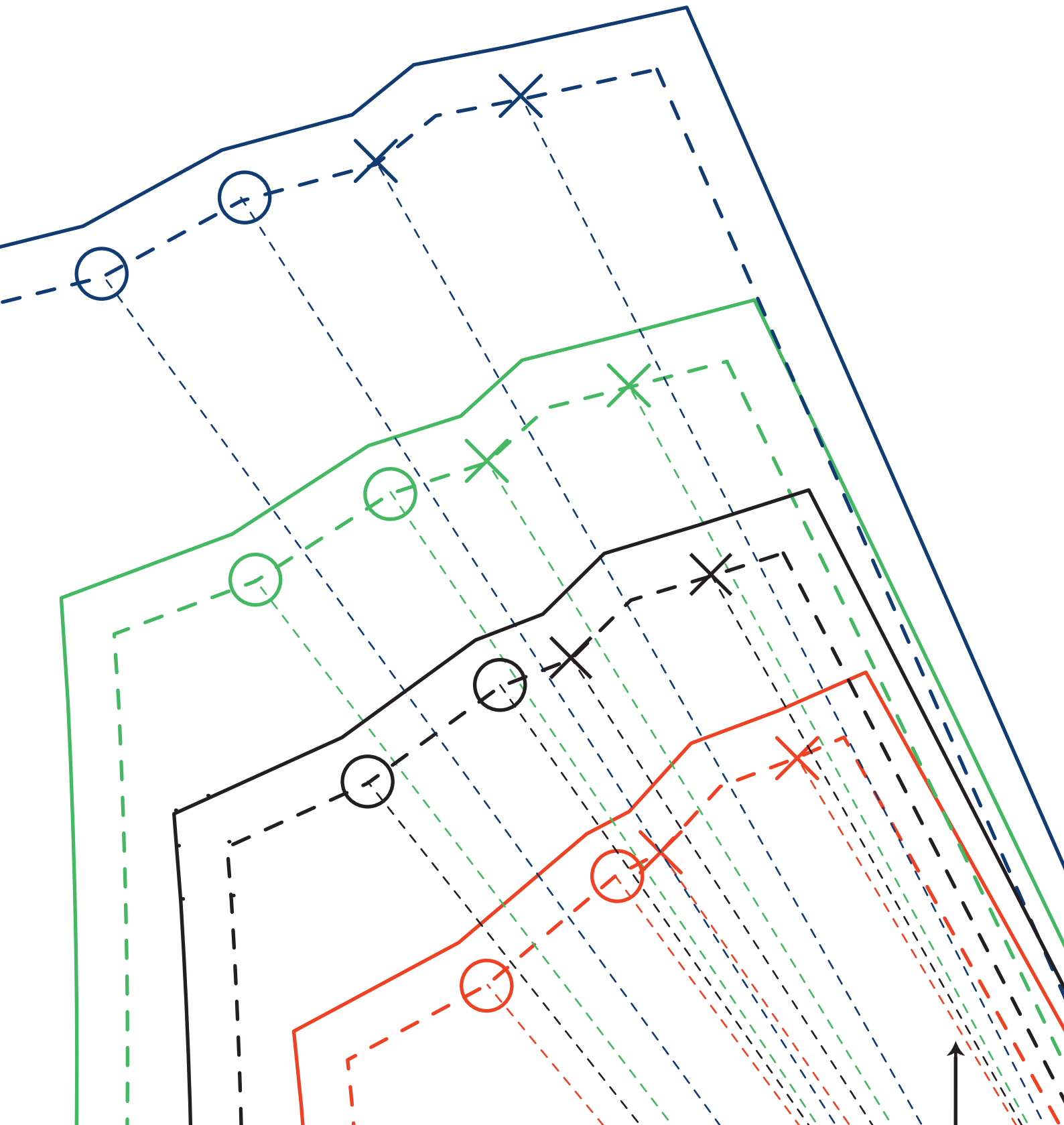


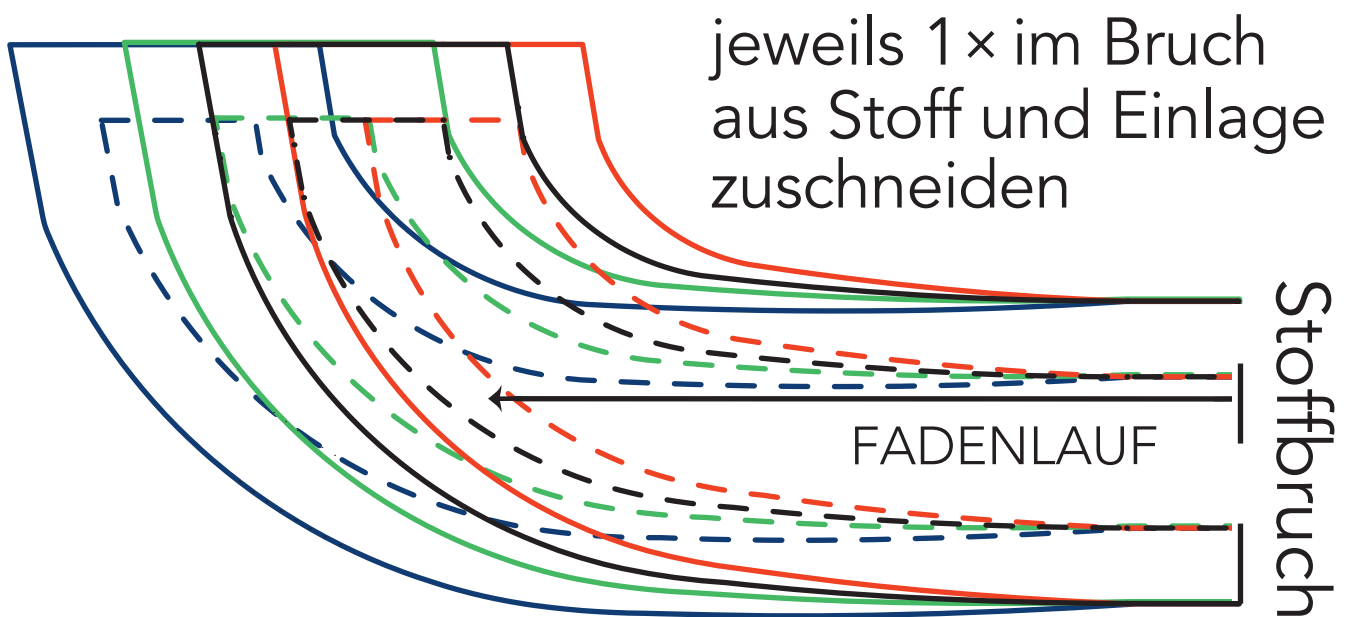
Masstabelle	32-34	36-38	40-42	44-46
Grösse:	XS	S	M	L
Oberweite:	84-91	92-99	100-109	110-121
Taille:	66-73	74-81	82-91	92-103
Hüfte:	91-97	98-104	105-113	114-124

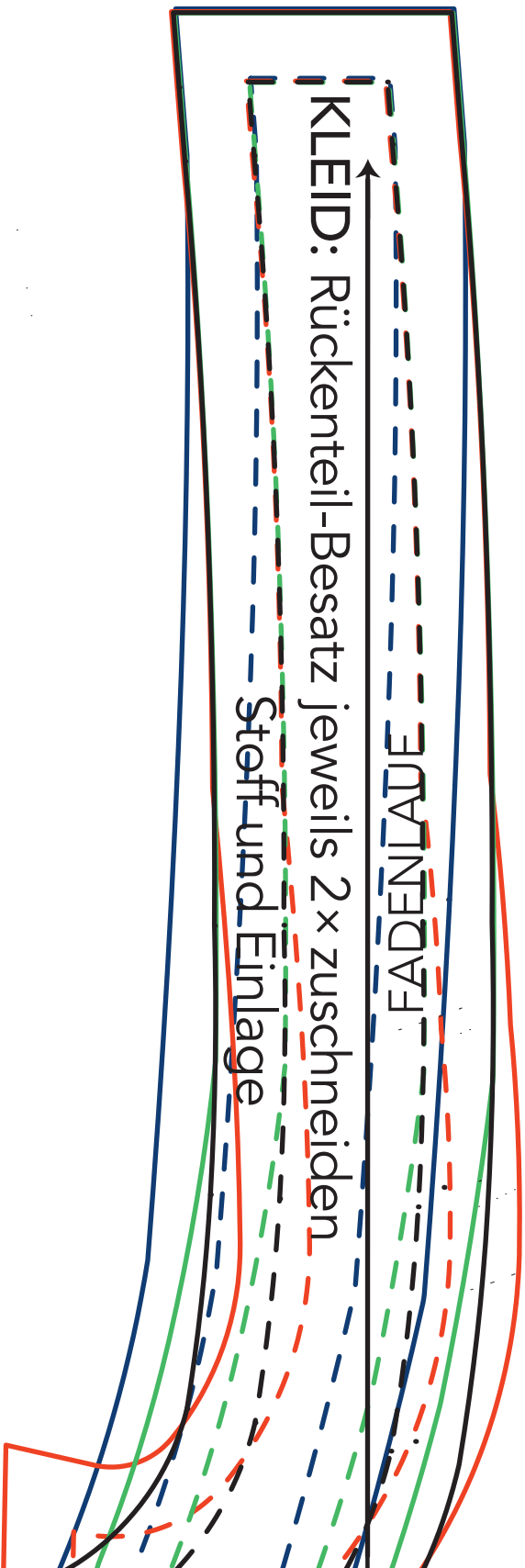




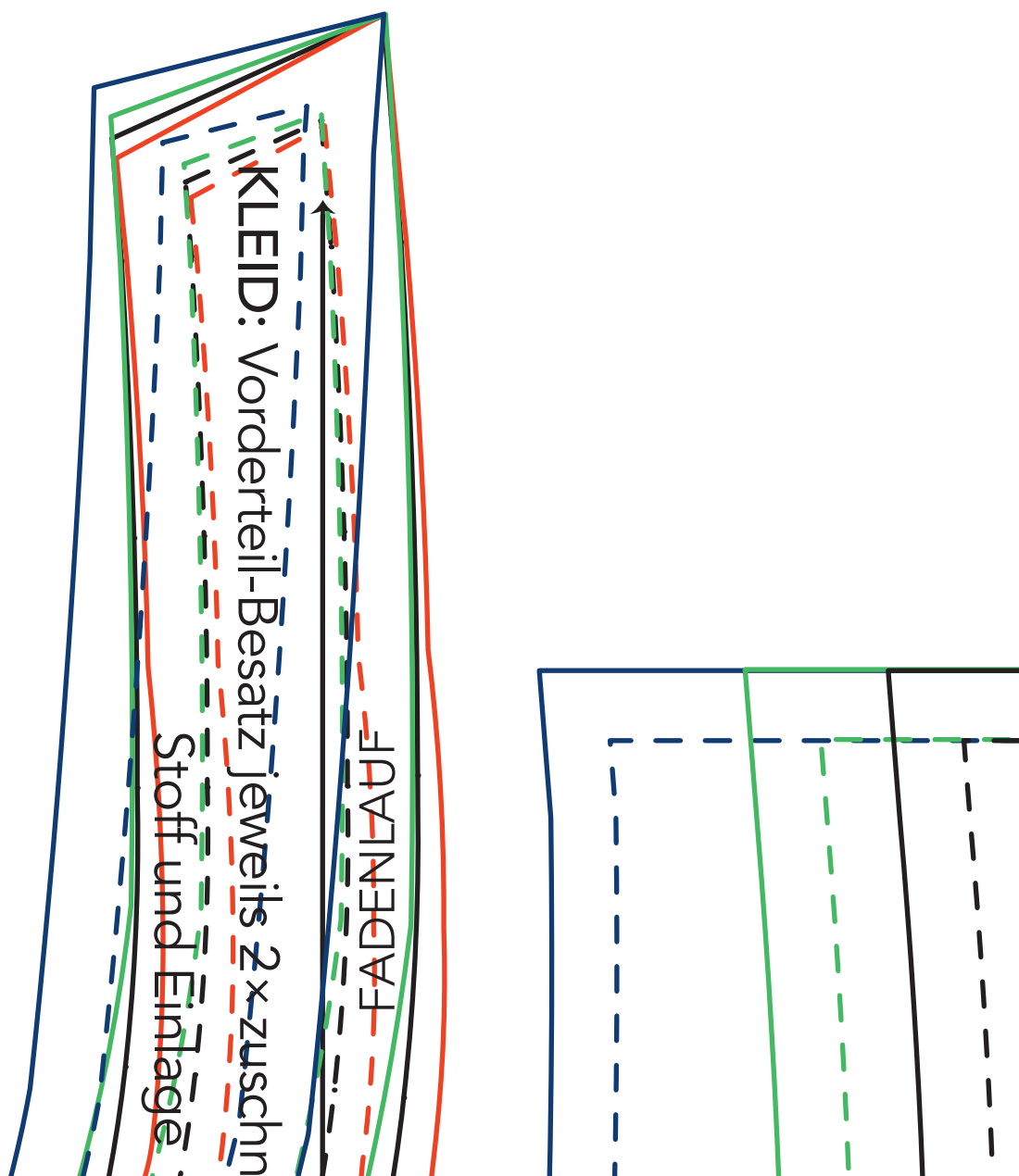
Die Nahtzugaben sind im Schnitt enthalten!

KLEID: Rückenteil-Besatz

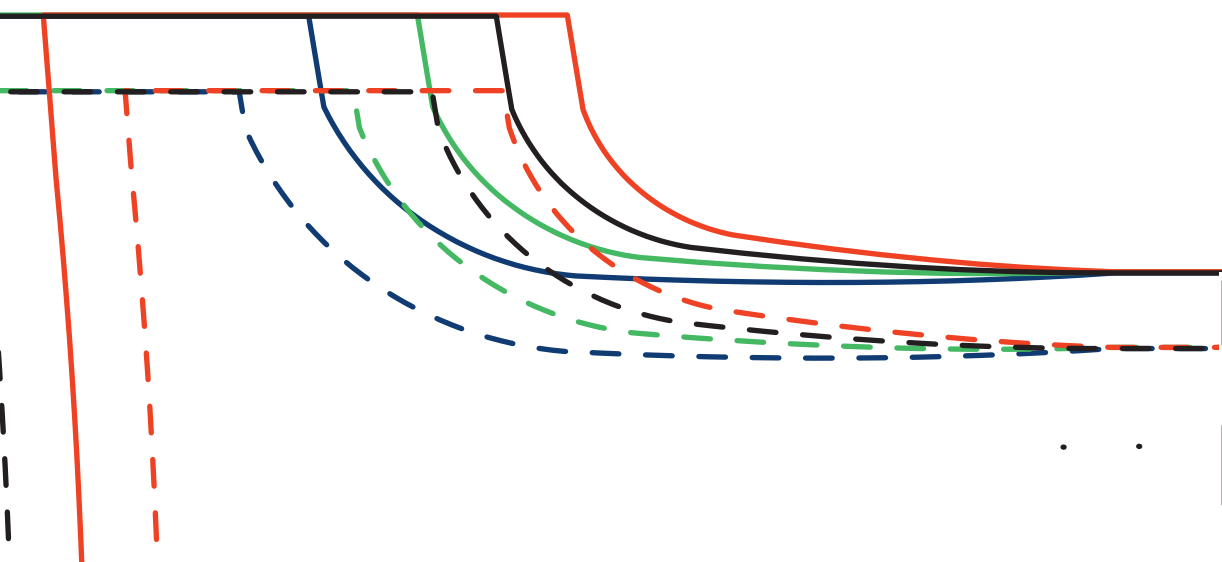


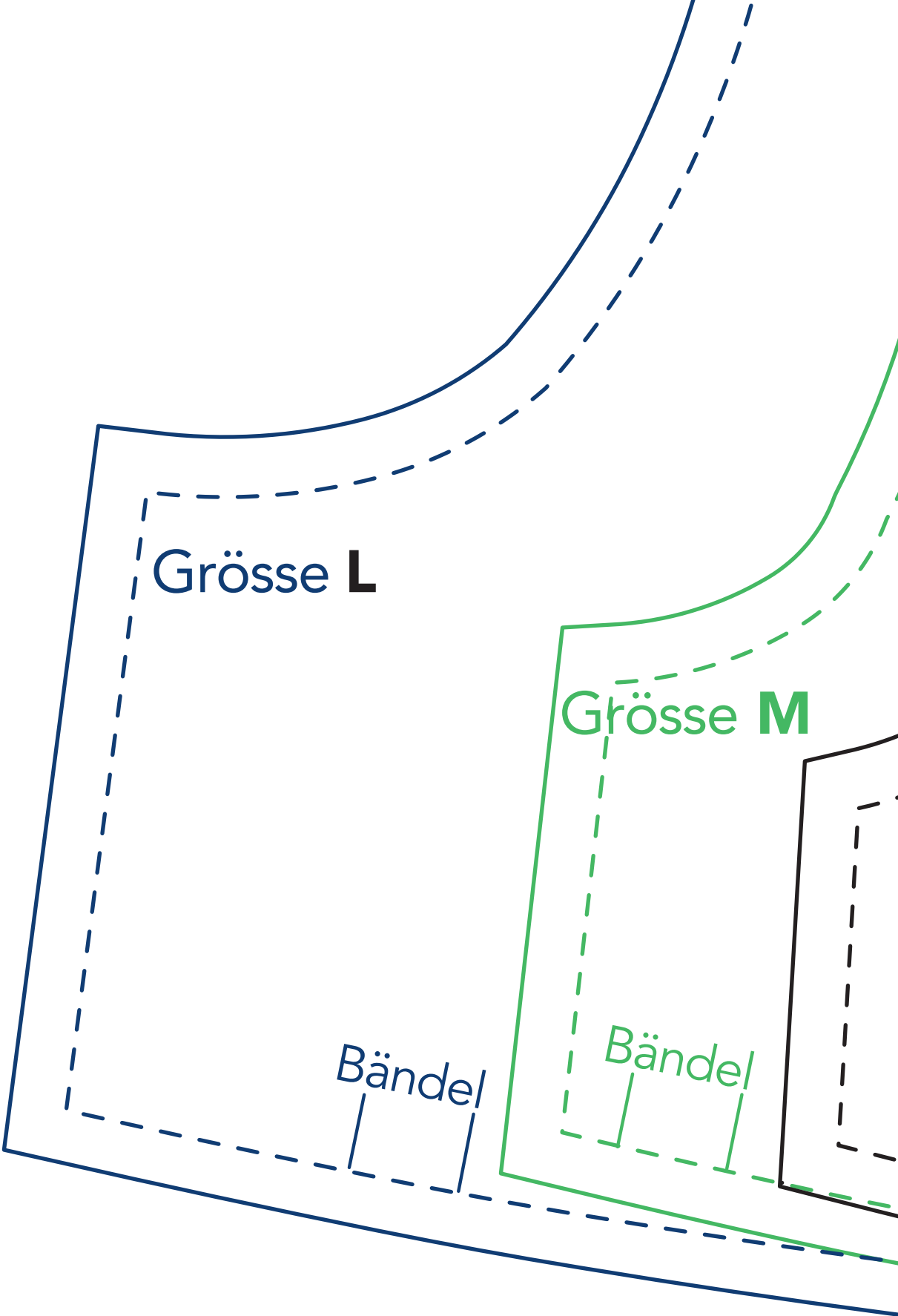


Das Quadrat sollte nach dem Ausdrucken 3 × 3 cm gross sein!



Schweizer LandLiebe





8

KLEID: Vorderteil oben
2 × zuschneiden

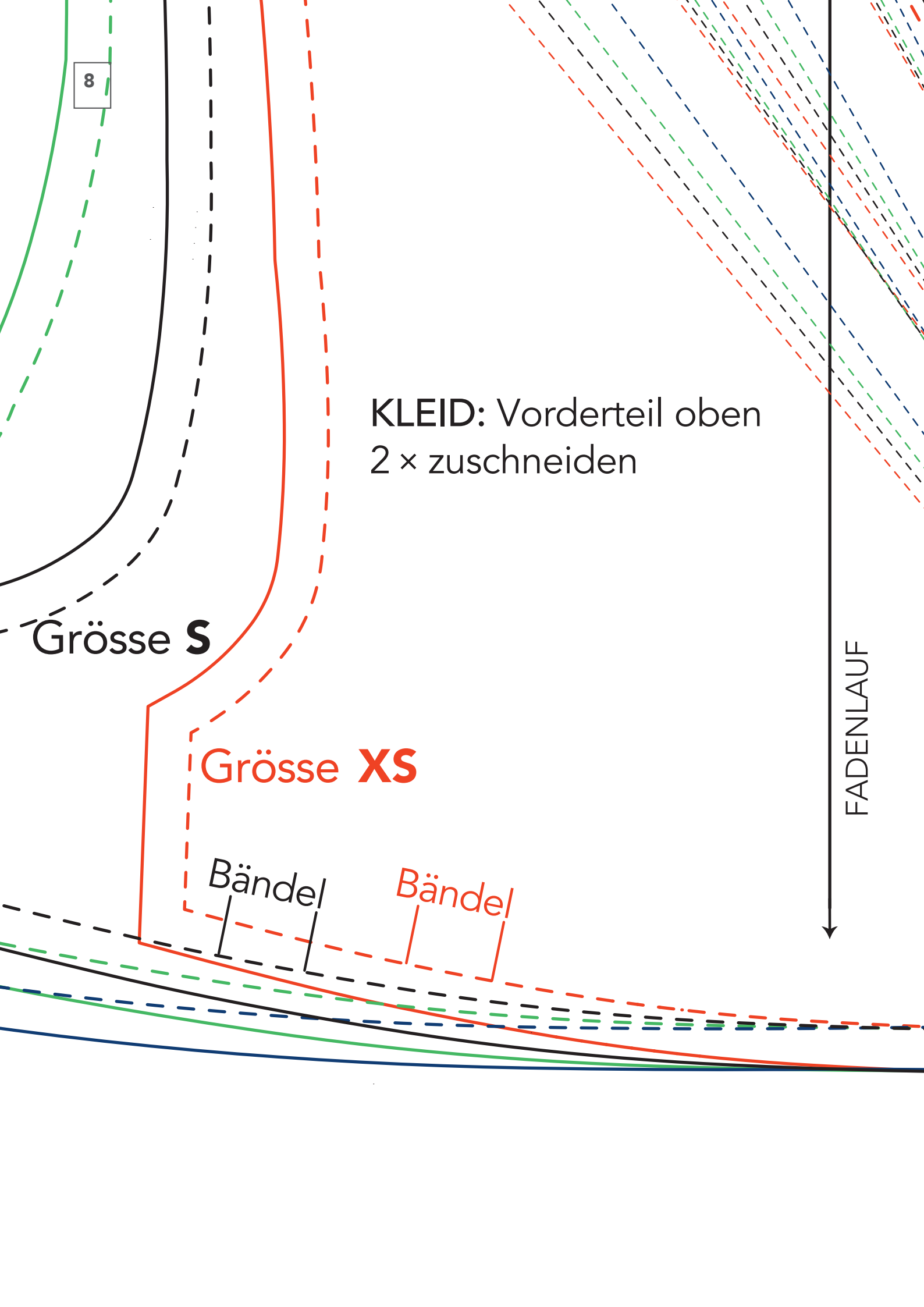
Grösse **S**

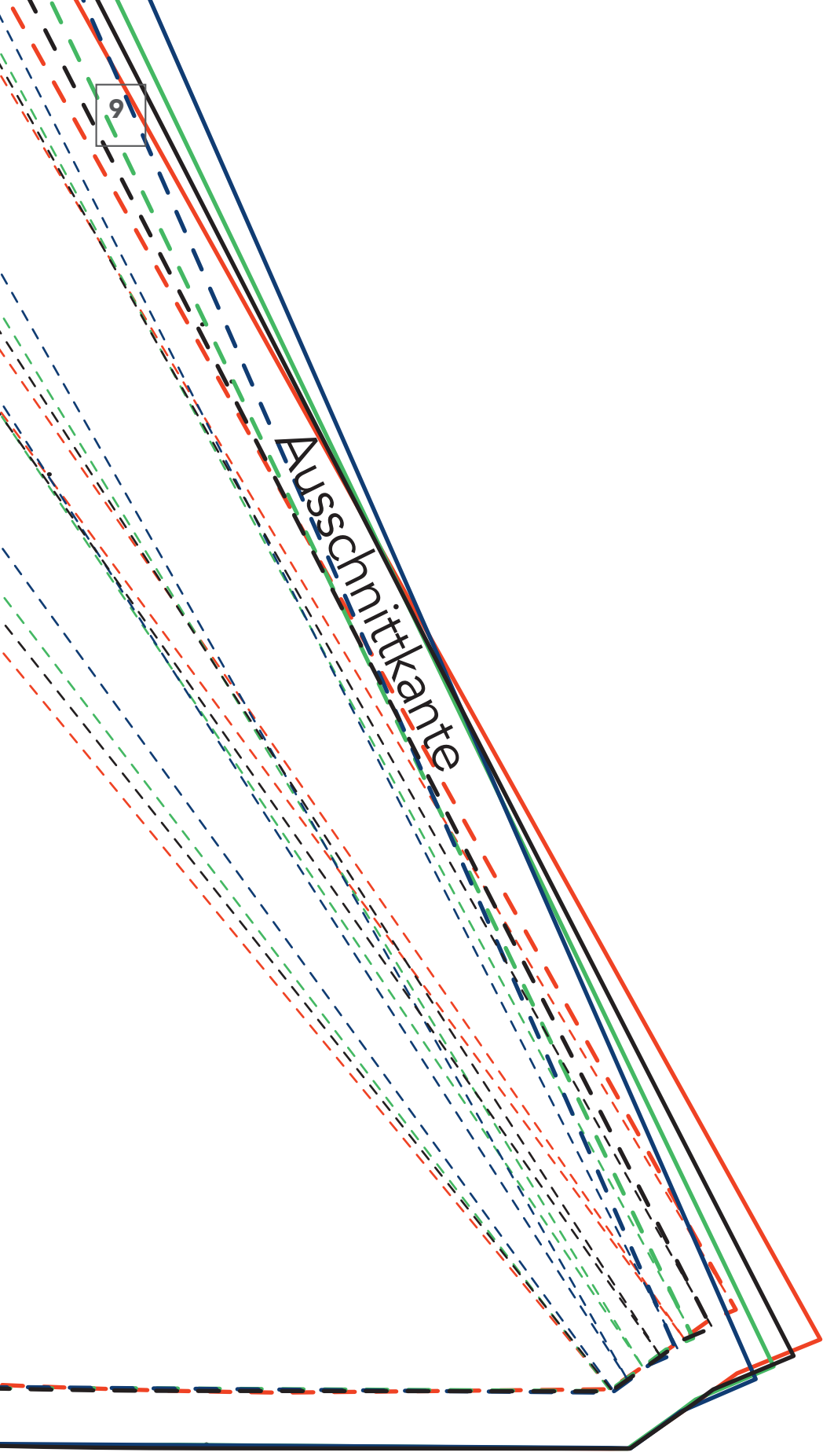
Grösse **XS**

Bündel

Bündel

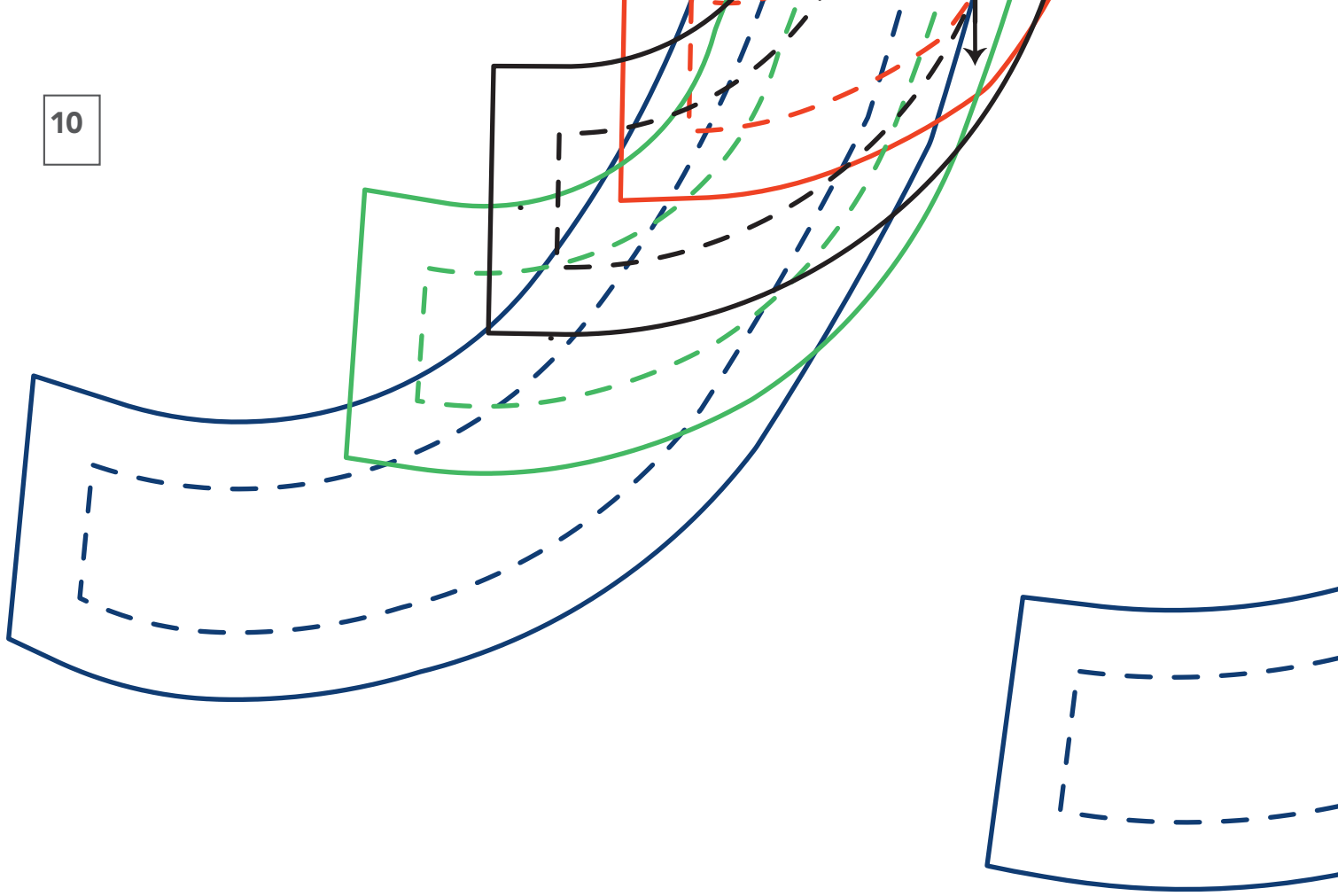
FADENLAUF



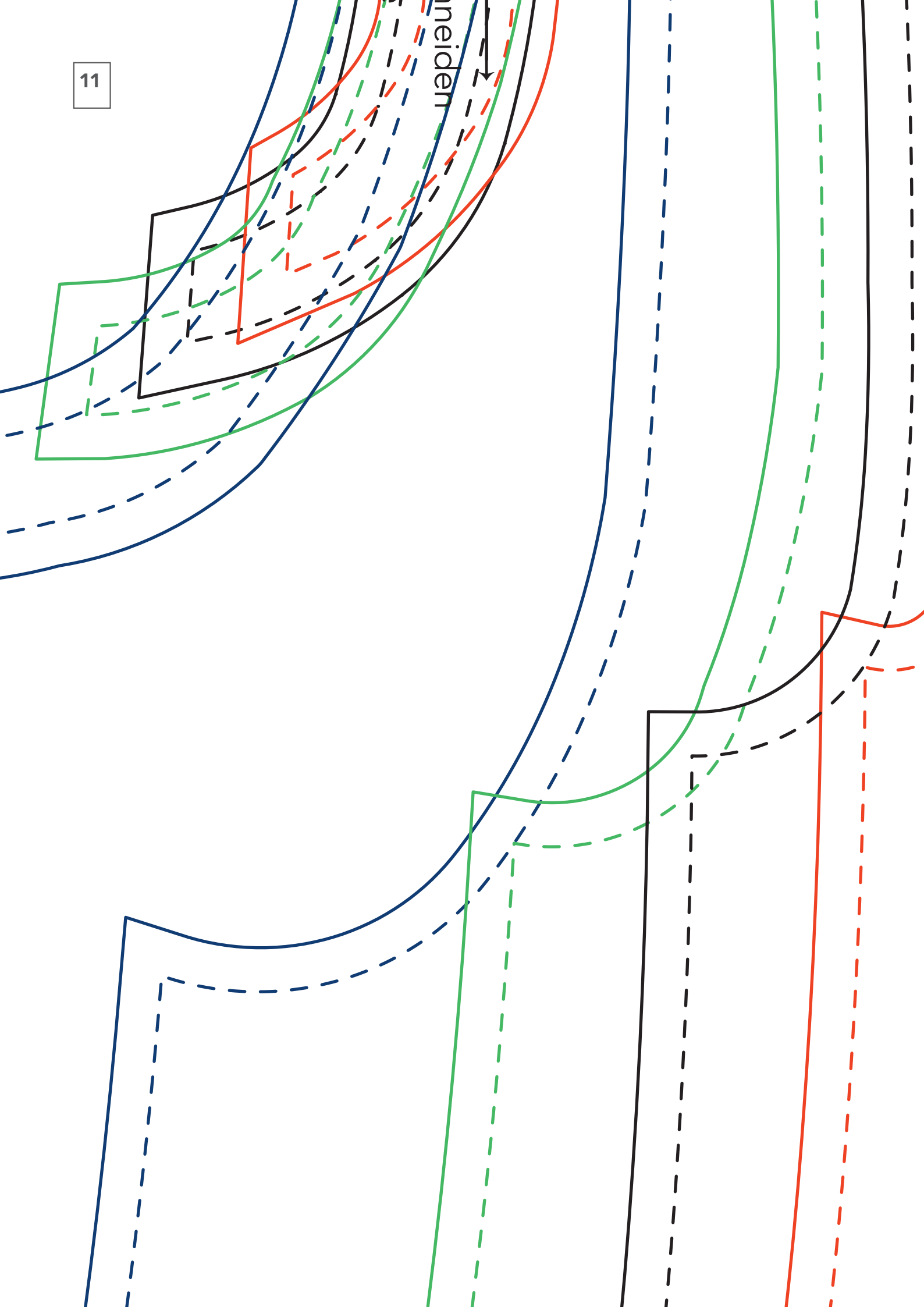


9

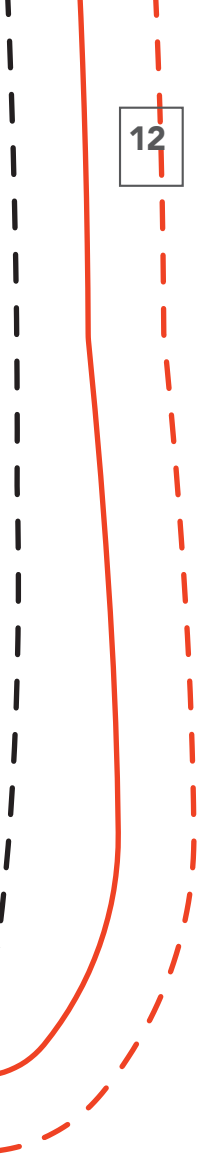
Ausschnittkante



neiden



12



• •
• •



• •

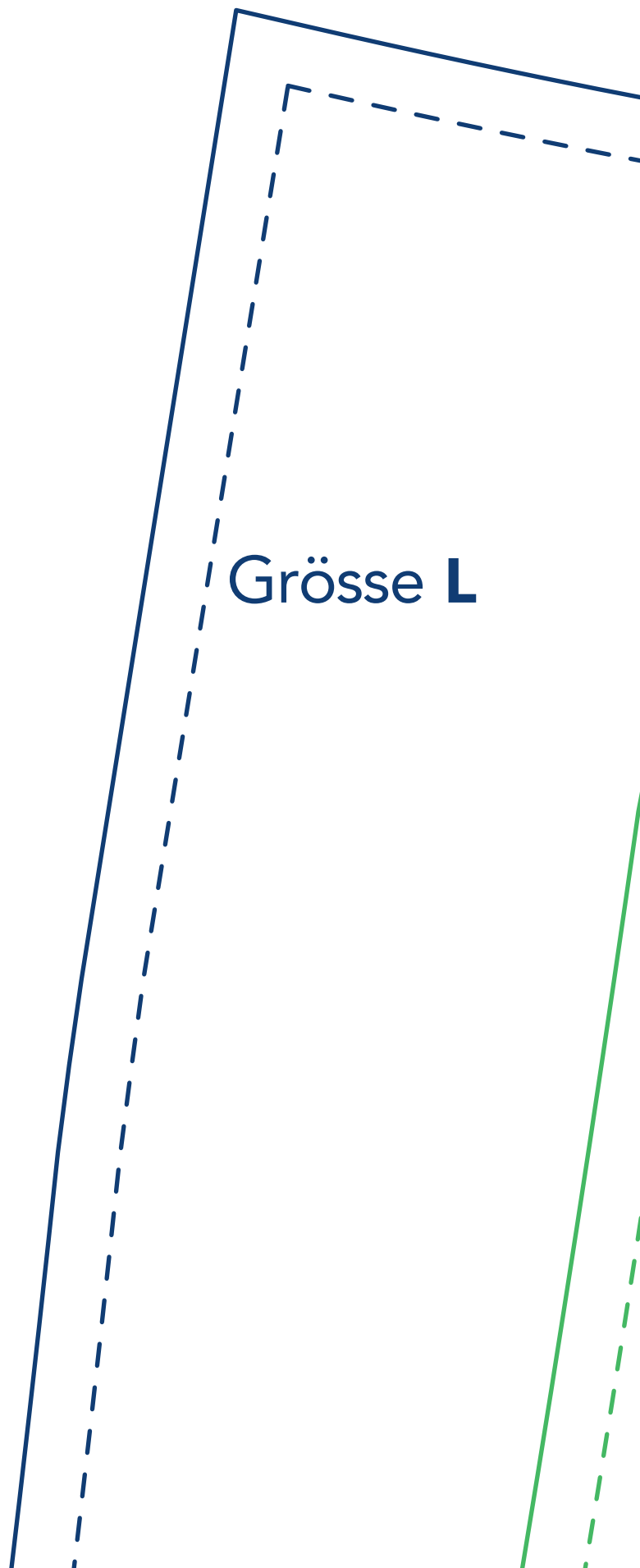
• •
• •

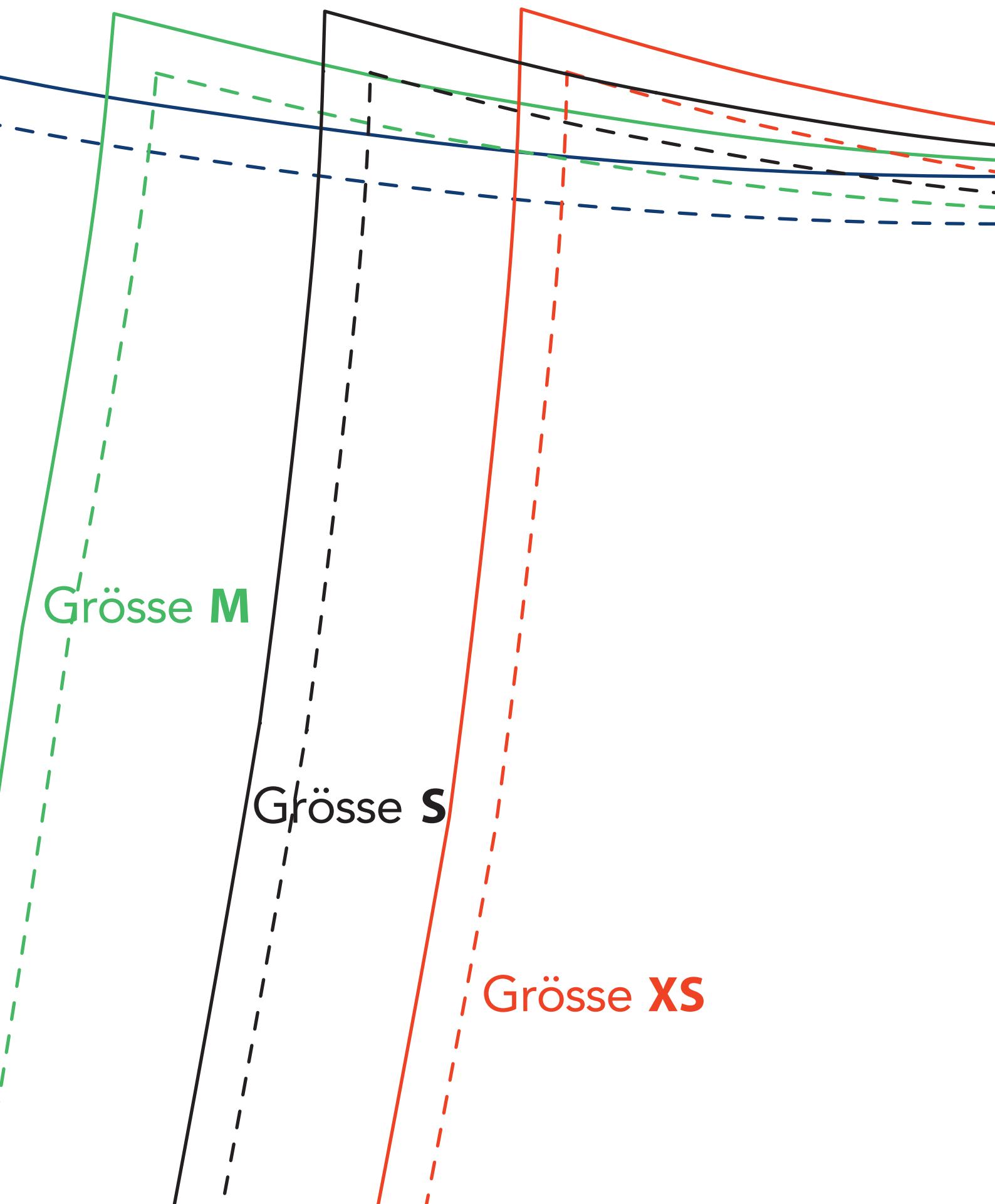




2013 Knit Kit GmbH / www.knit-kit.ch

Dieses Schnittmuster ist urheberrechtlich geschützt!

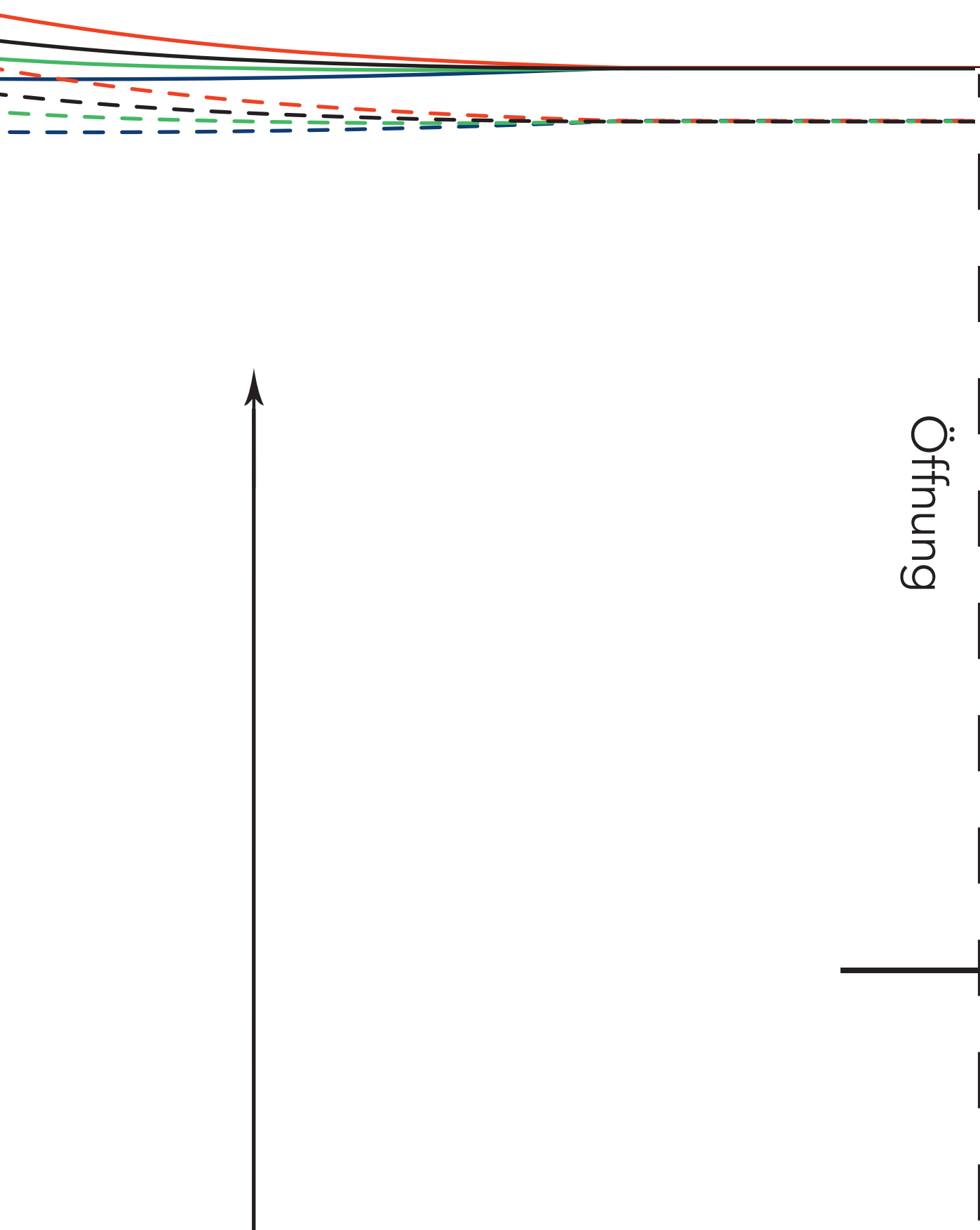




Grösse **M**

Grösse **S**

Grösse **XS**



Öffnung

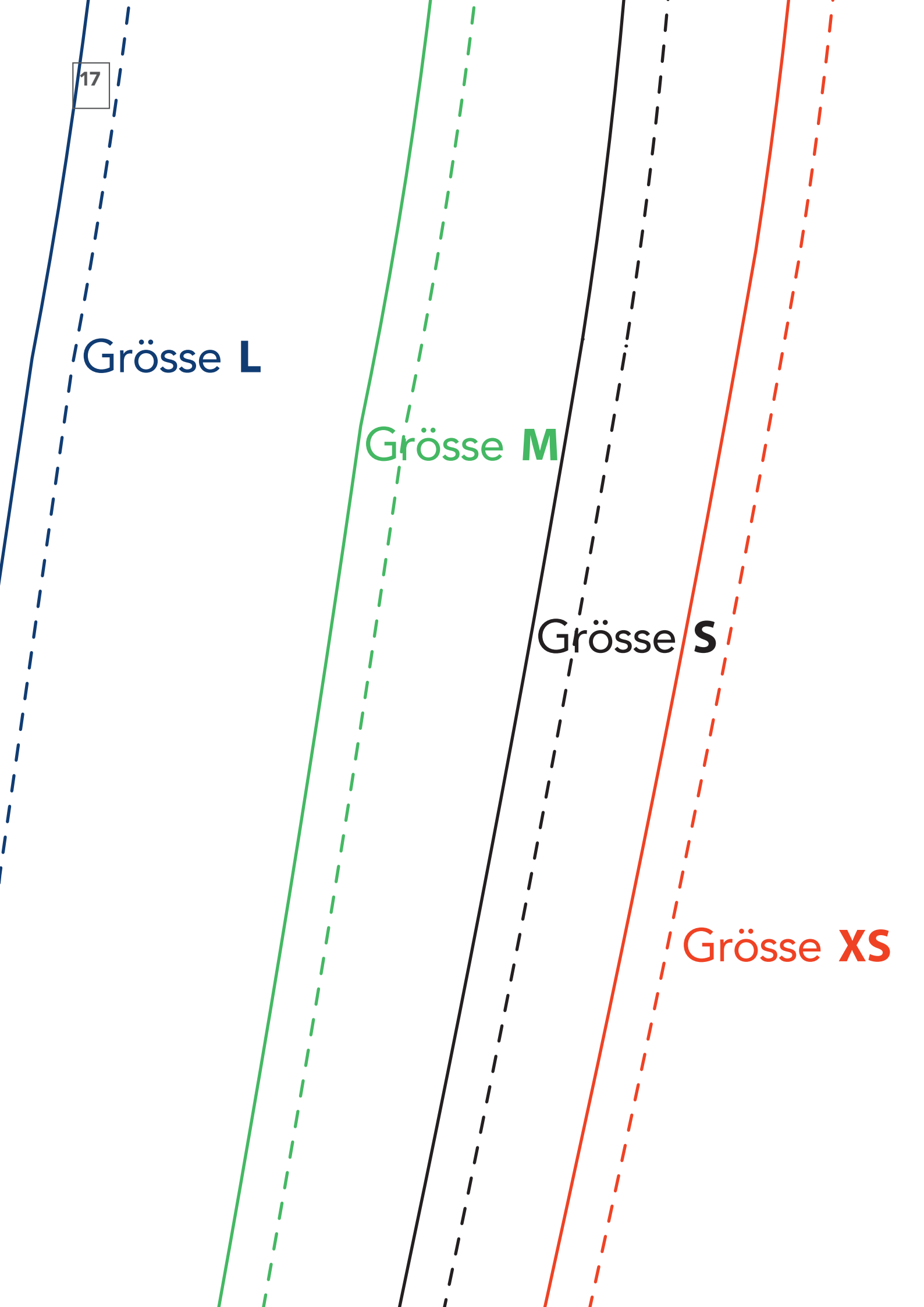


Grösse **L**

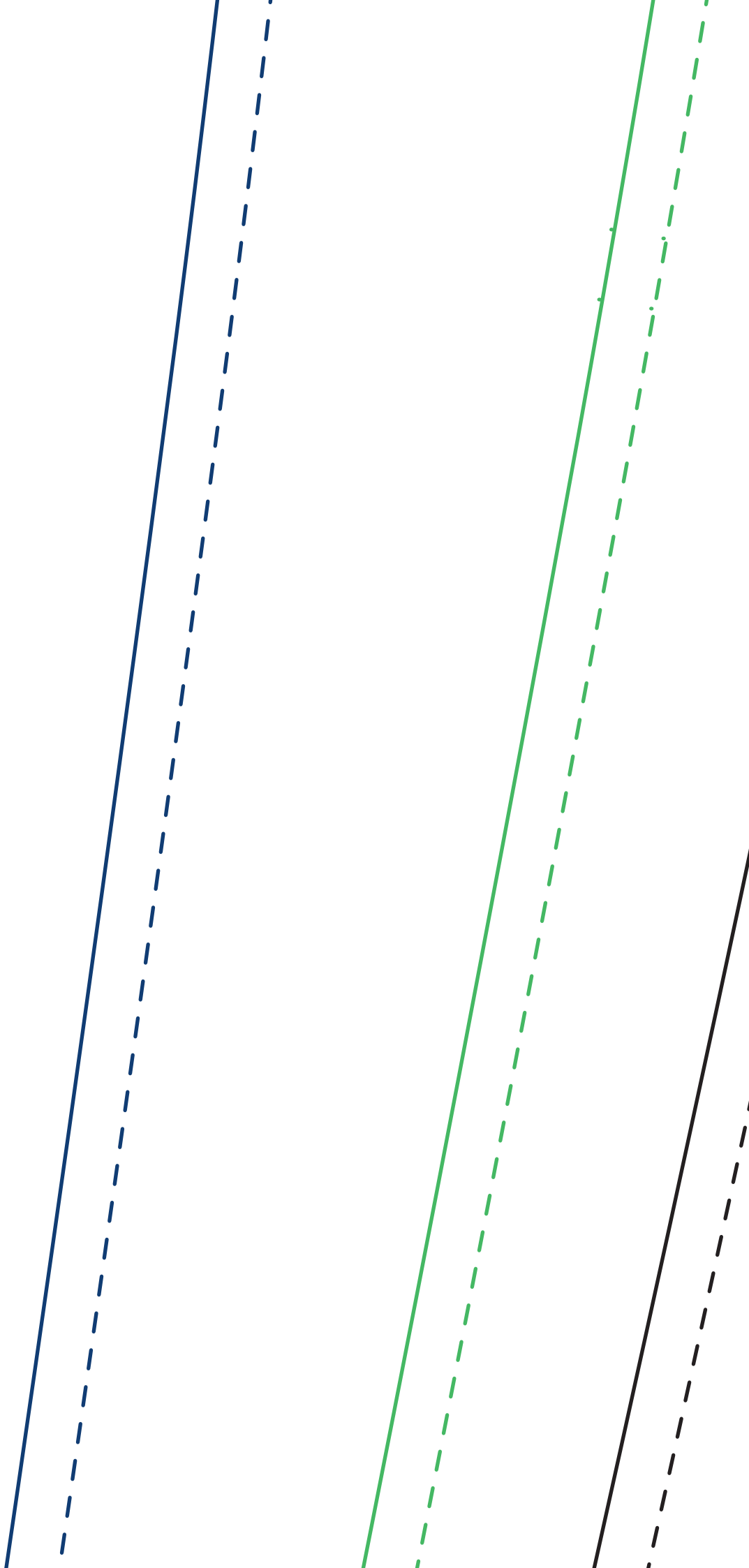
Grösse **M**

Grösse **S**

Grösse **XS**



Stoffbruch

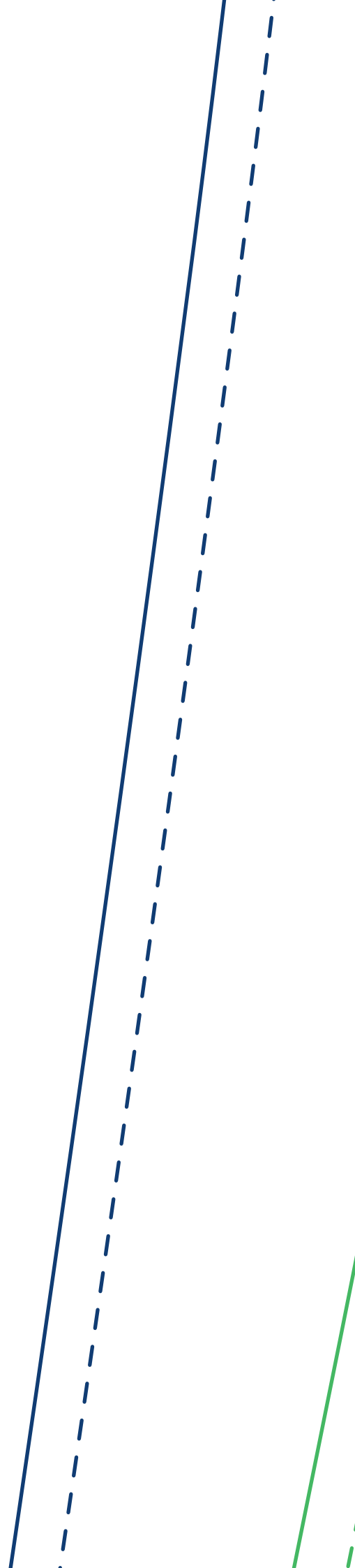


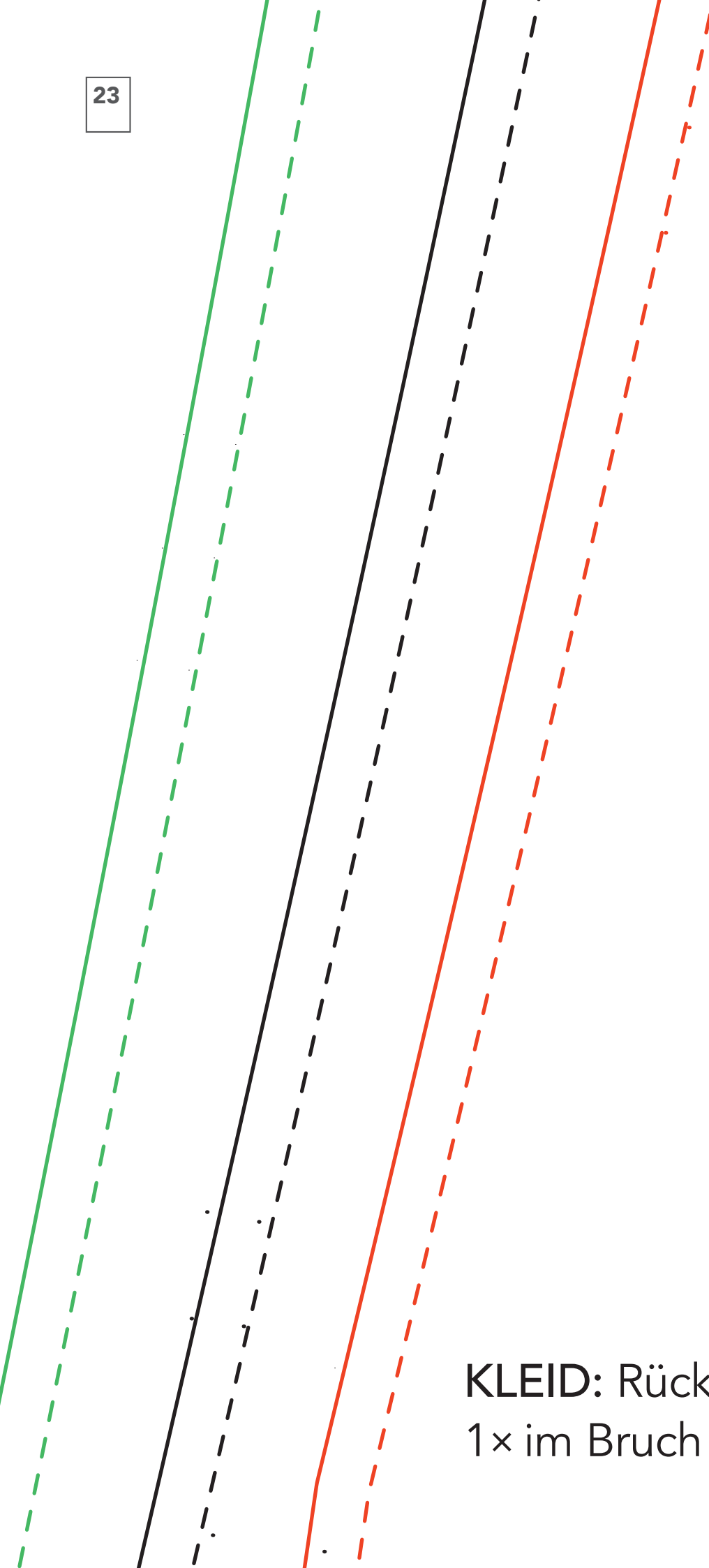
The image shows a technical drawing of a dress pattern piece, specifically the front skirt section. It consists of two pairs of parallel lines sloping downwards from left to right. The first pair is black, with a solid line on the left and a dashed line on the right. The second pair is red, also with a solid line on the left and a dashed line on the right. The dashed lines represent cutting lines. A small box containing the number '20' is located in the upper left corner.

20

KLEID: Vorderes Rockteil unten
1× im Bruch zuschneiden

Stoffbruch

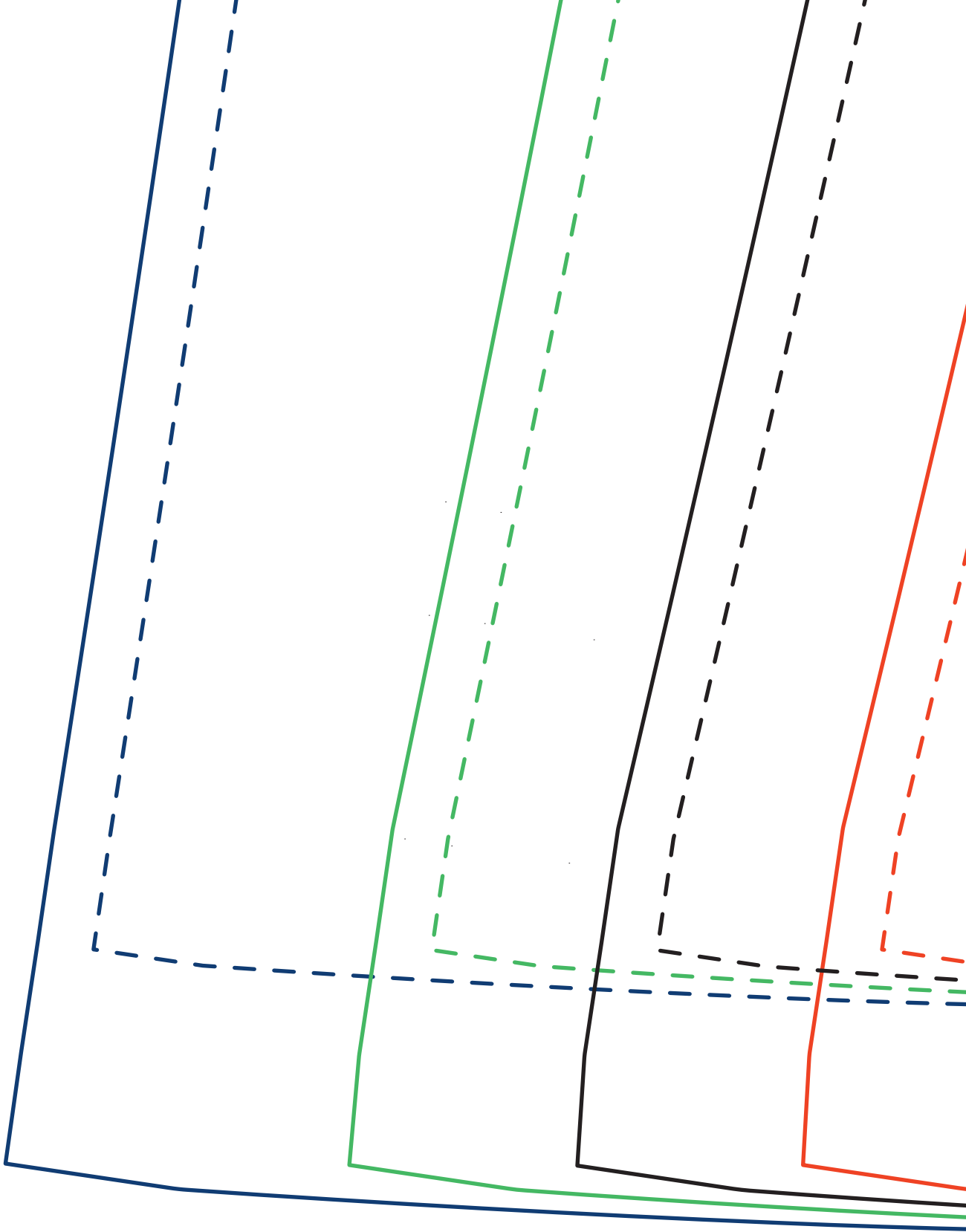




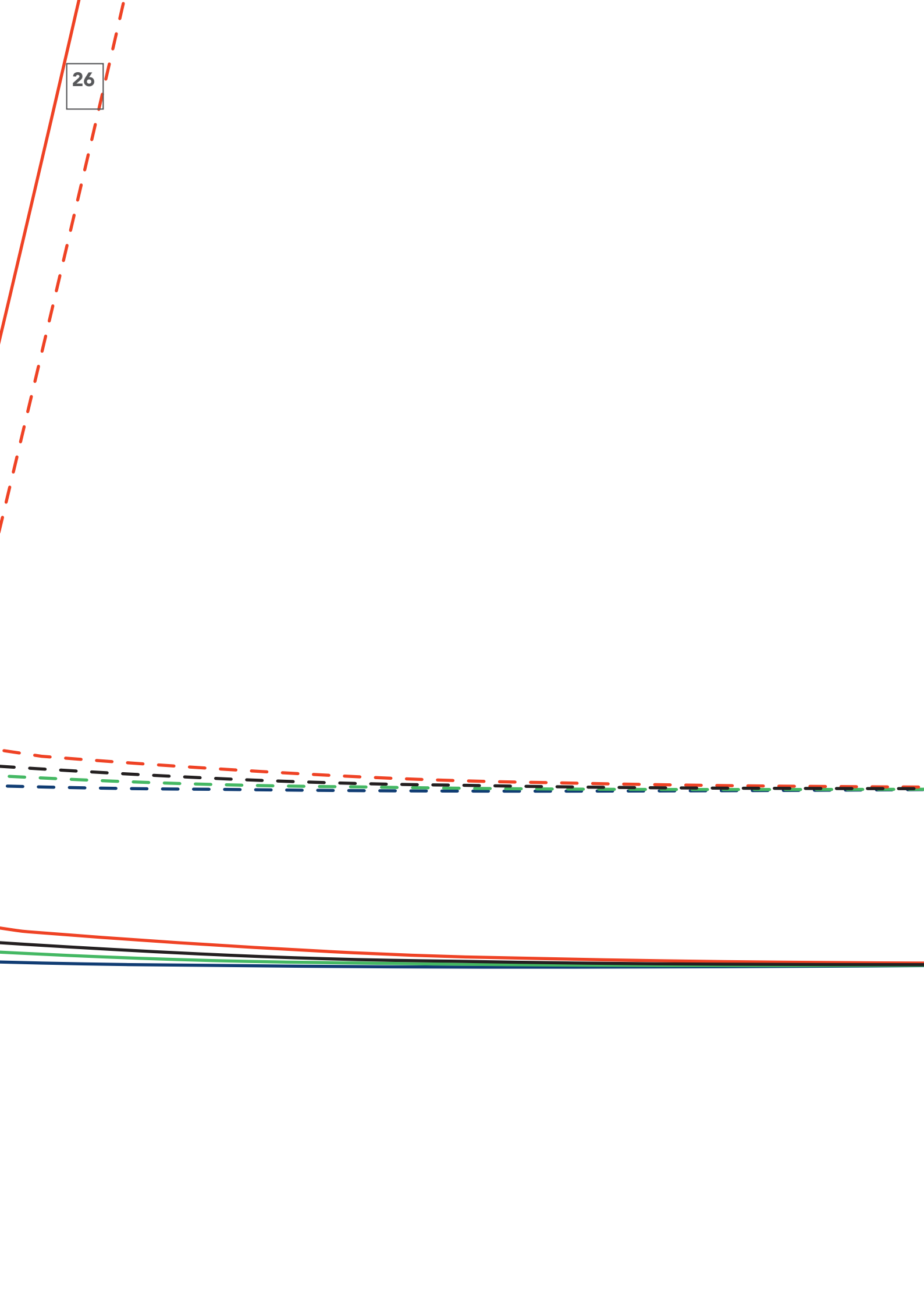
KLEID: Rückenteil
1× im Bruch zuschneiden

FADENLAUF



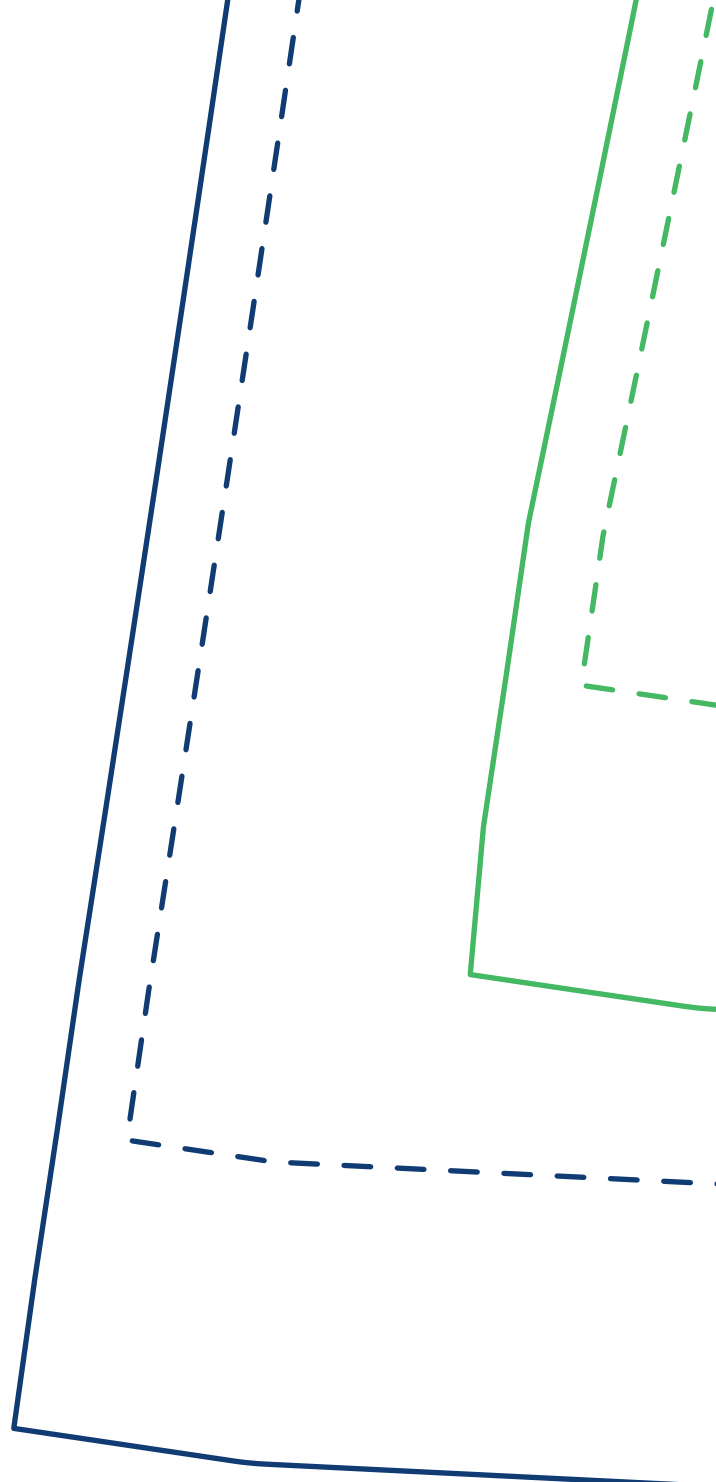


26

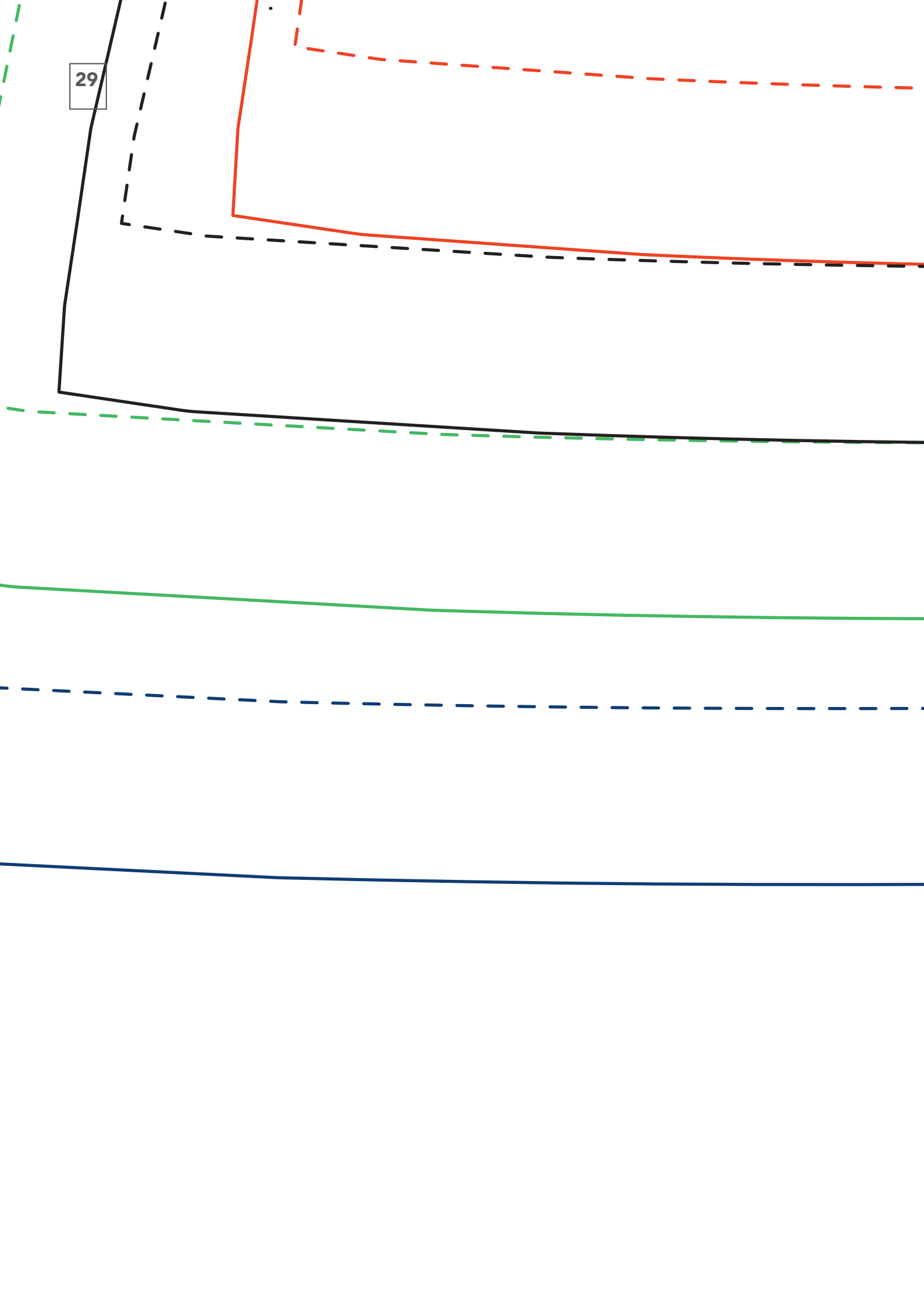


FADENLAUF





29



30

