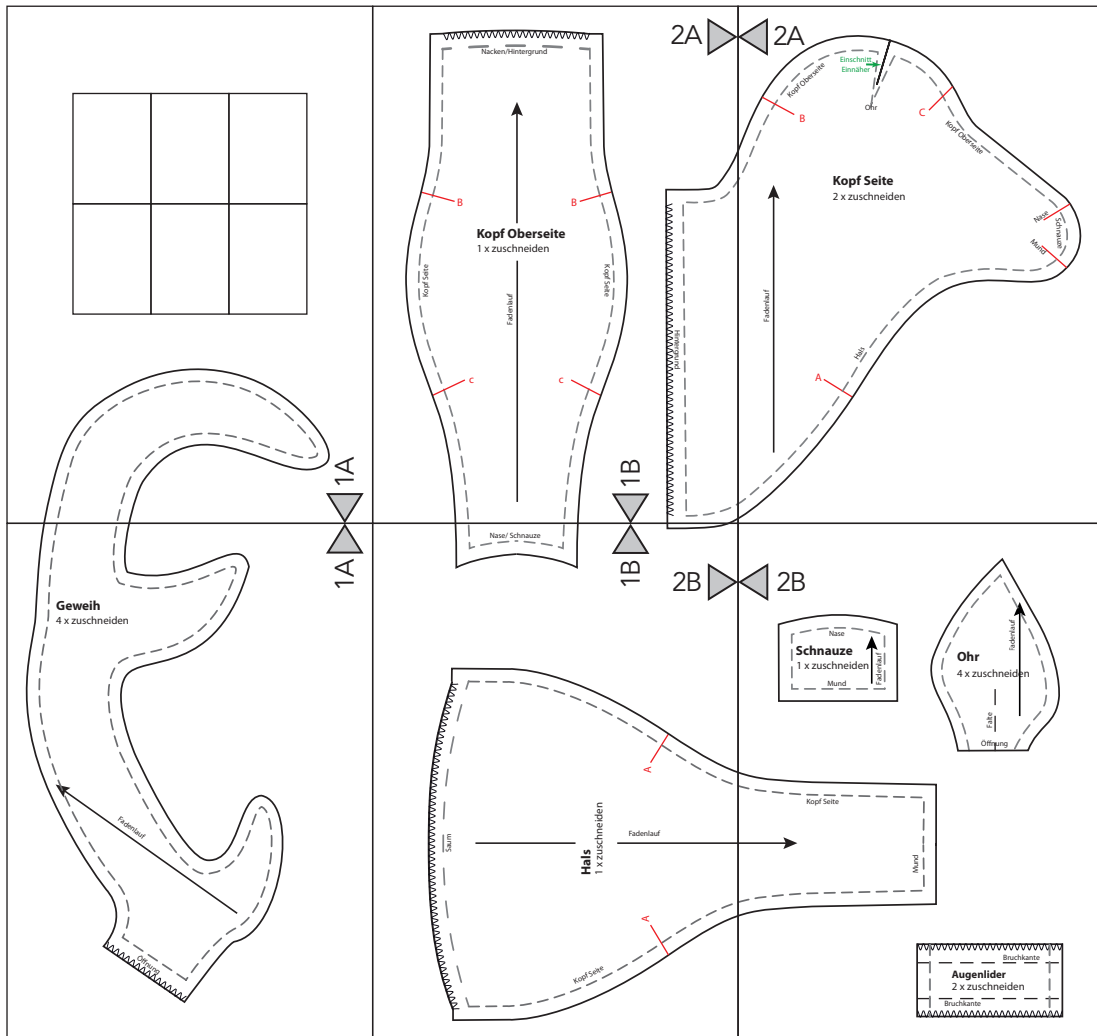
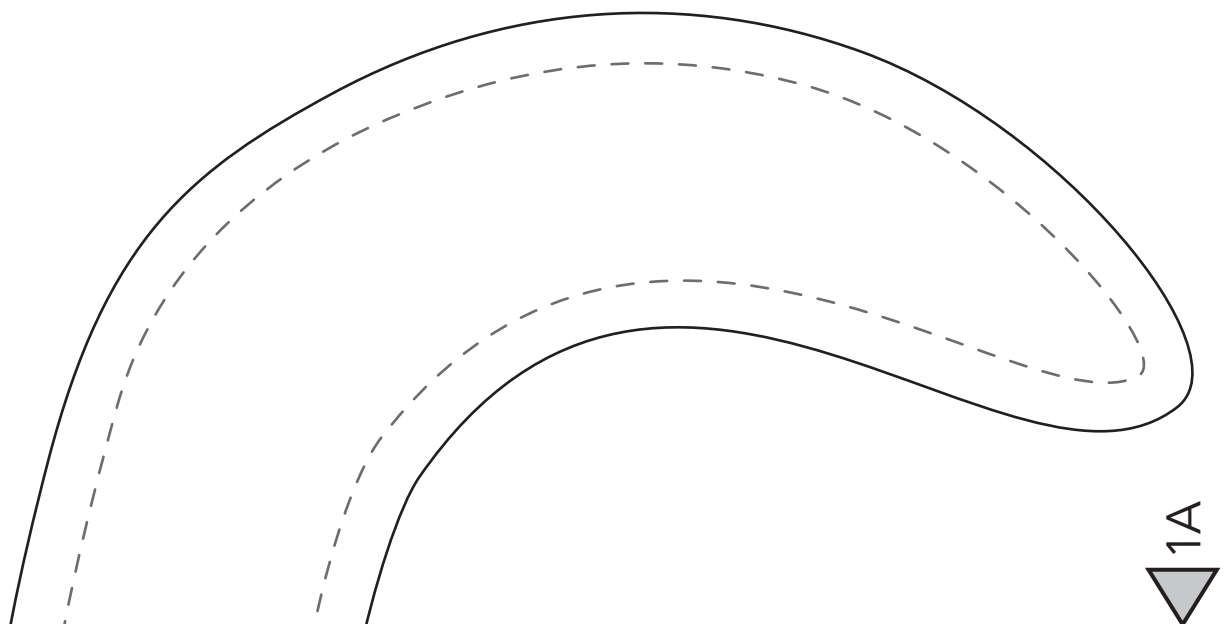


Schweizer LandLiebe



Das Schnittmuster ohne Skalierung (100%) ausdrucken.



2A 

Nacken/Hintergrund

Kopf Oberseite
1 x zuschneiden

Kopf Seite

Fadenlauf 

Kopf Seite

Hintergrund

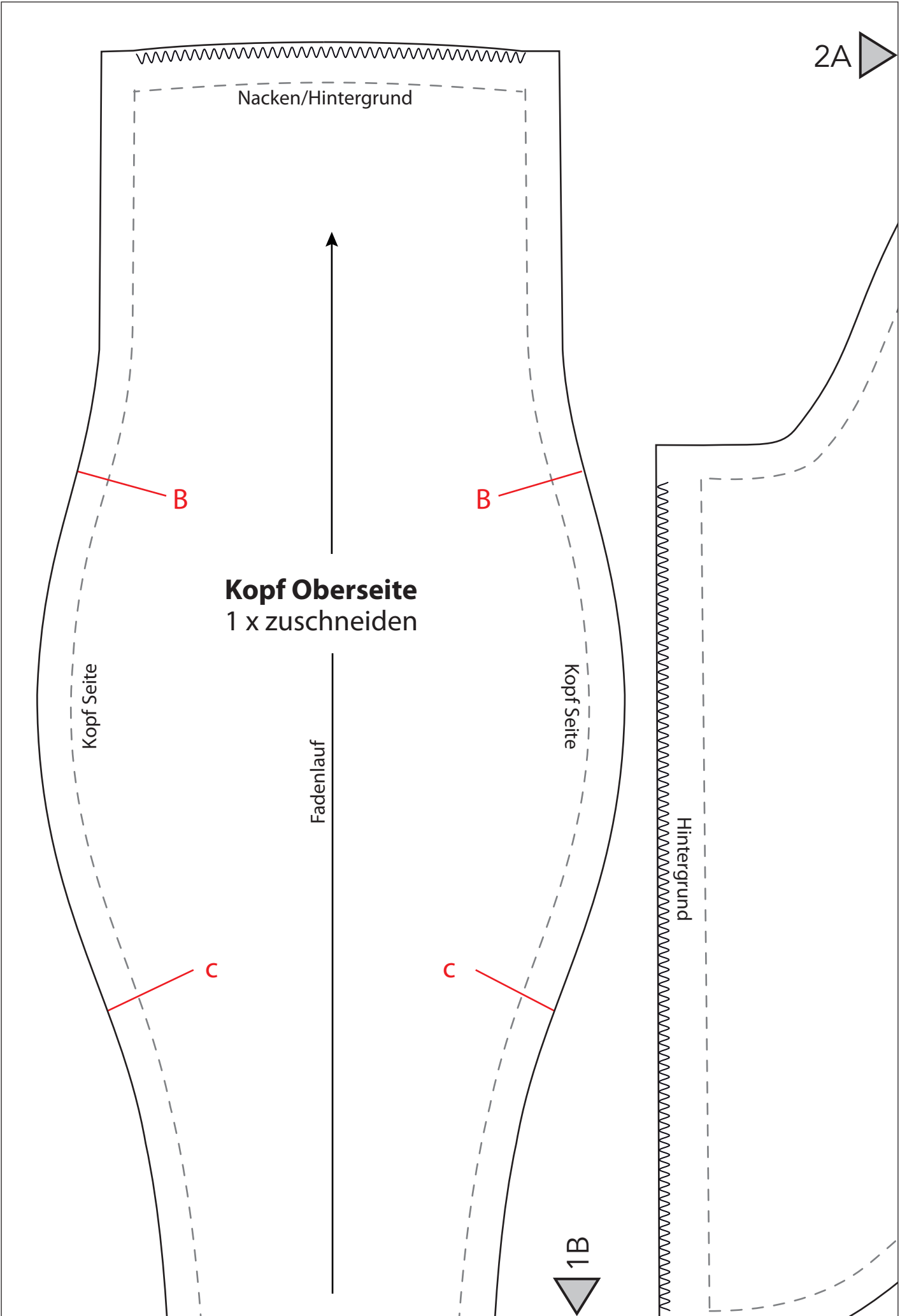
B

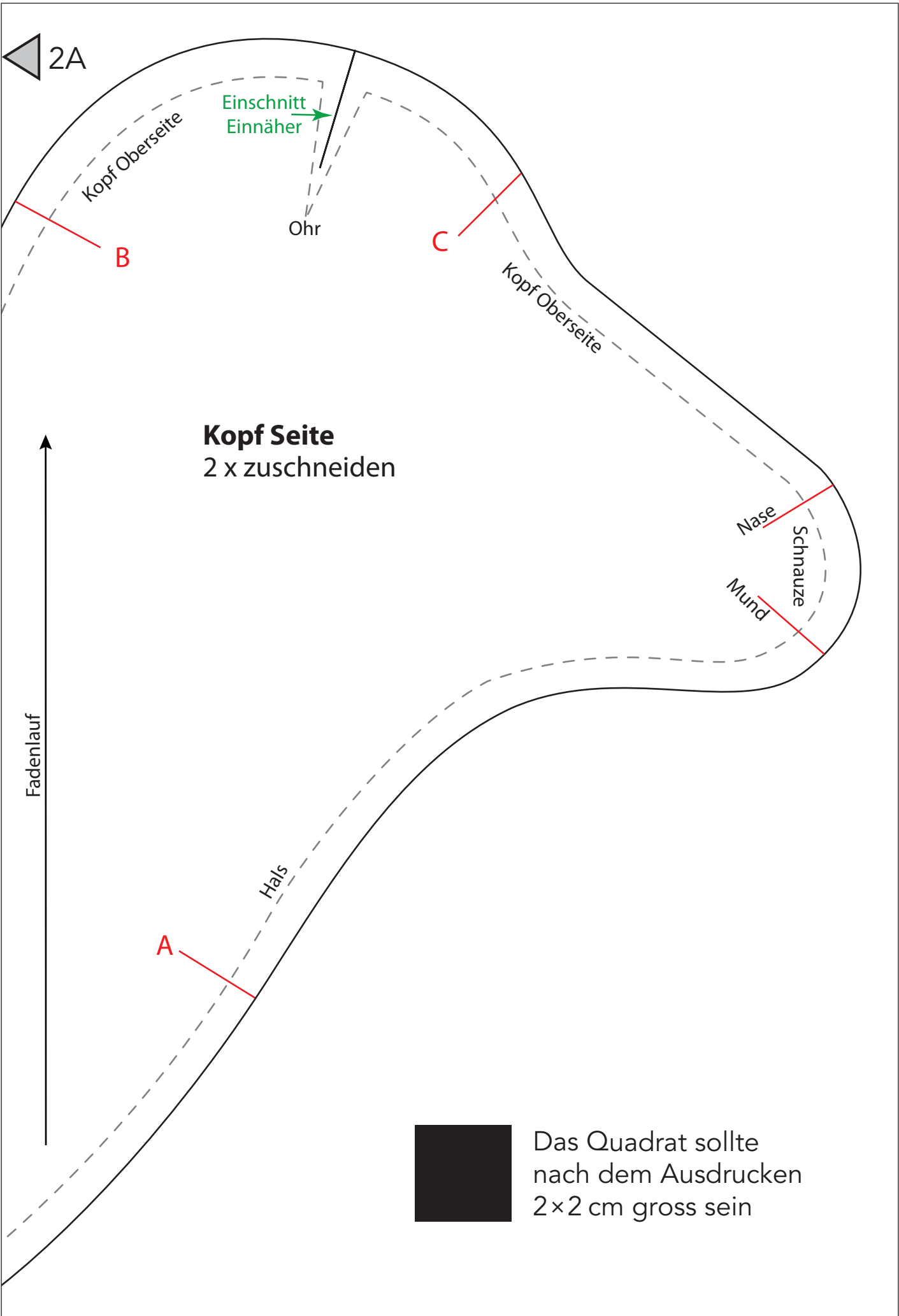
B

C

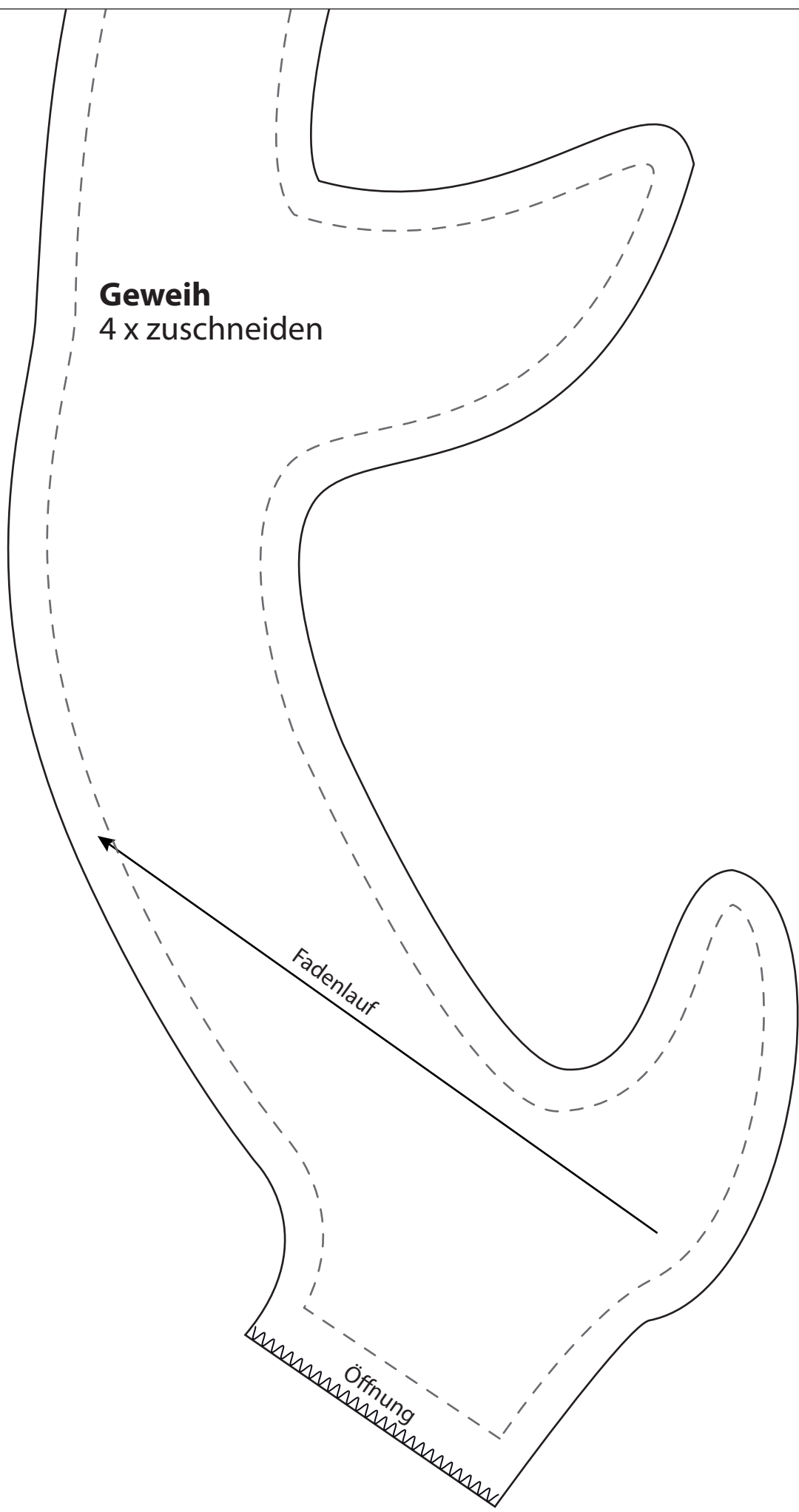
C

1B 



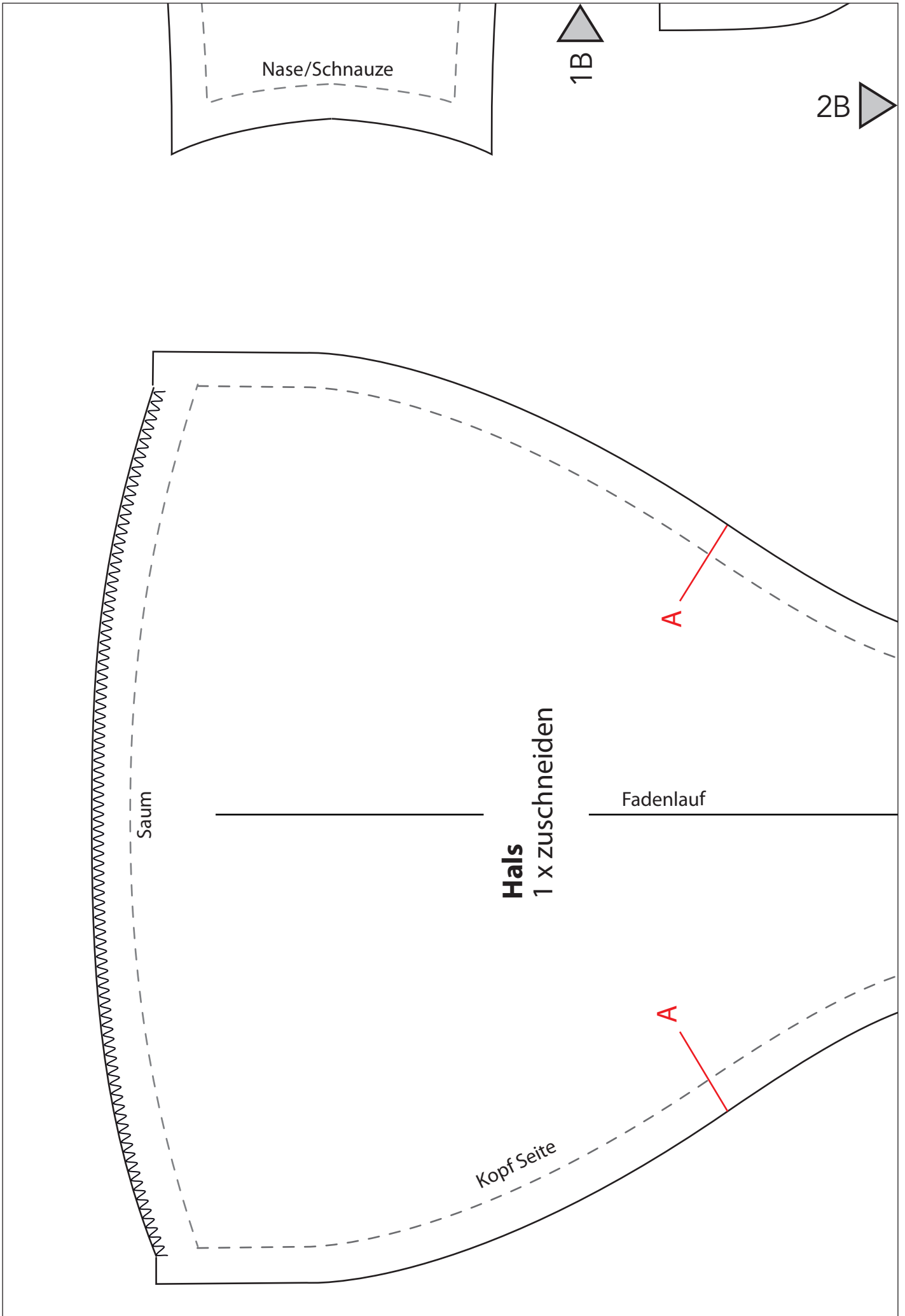


Geweih
4 x zuschneiden



Fadenlauf

Öffnung



◀ 2B

